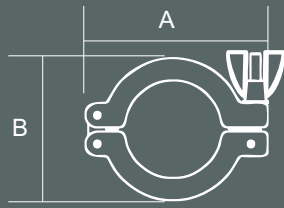
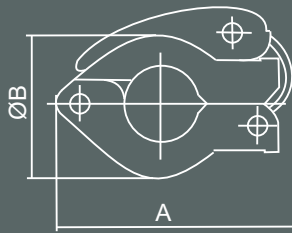


ISO-KF-Zubehör



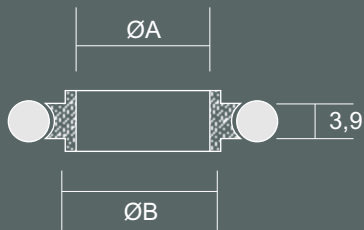
ISO-KF Normalspannung, Aluminium

Art. Nr.	DN	A	B	C	D
ZSR1016	10 / 16	62	41	-	-
ZSR2025	20 / 25	72	52	-	-
ZSR3240	32 / 40	90	68	-	-



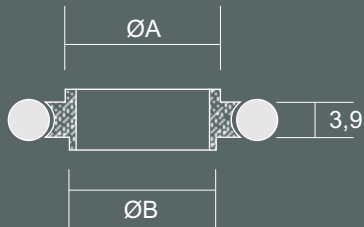
ISO-KF Schnellspannung, Aluminium / Kunststoff

Art. Nr.	DN	A	B	C	D
ZSSR1016	10 / 16	66	45	-	-



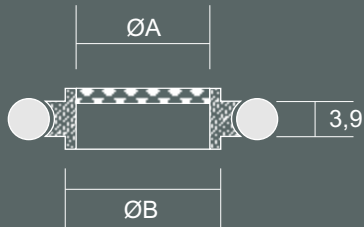
ISO-KF Zentrierdichtring, Edelstahl / Viton®

Art. Nr.	DN	A	B	C	D
ZZR016	16	16	17	-	-
ZZR025	25	25	26	-	-
ZZR040	40	40	41	-	-



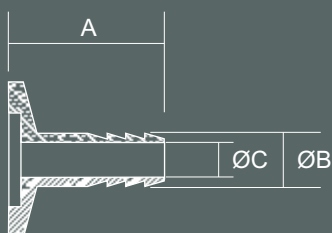
ISO-KF Reduzierzentrierring, Edelstahl / Viton®

Art. Nr.	DN	A	B	C	D
ZZR1016	10 / 16	17	12	-	-



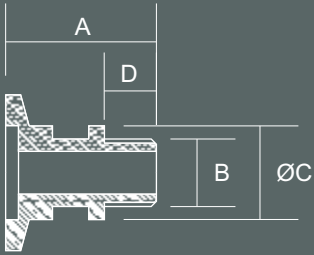
ISO-KF Zentrierdichtring mit Sinterfilter, Edelstahl / Viton® / Sinterbronze

Art. Nr.	DN	A	B	C	D
ZZSF016	16	16	17	-	-



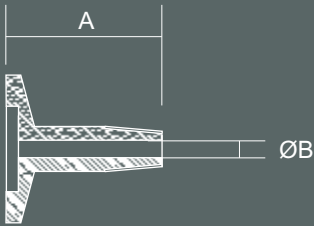
ISO-KF Schlauchwelle, Edelstahl 1.4301

Art. Nr.	DN	A	B	C	D
ZSW1612	16	40	12	8	-



ISO-KF Adapter G1/4 Außengewinde, Edelstahl

Art. Nr.	DN	A	B	C	D
ZG1614	16	29	G1/4	18	10



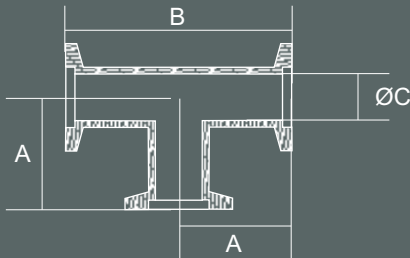
ISO-KF Adapter NPT Außengewinde, Edelstahl 1.4301

Art. Nr.	DN	A	B	C	D
ZNPT14	16	30	1/4"	-	-



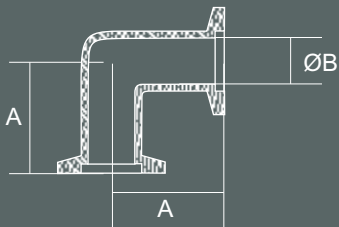
ISO-KF Anschweißflansch, Edelstahl 1.4301

Art. Nr.	DN	A	B	C	D
ZSF016	16	26	20	2	-
ZSFL016	16	70	20	2	-
ZSF025	25	26	28	2	-
ZSFL025	25	70	28	2	-



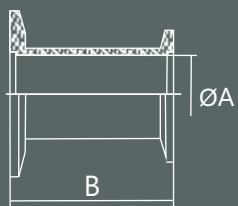
ISO-KF T-Stück, Aluminium

Art. Nr.	DN	A	B	C	D
ZTA016	16	40	80	16	-
ZTA025	25	50	100	24	-



ISO-KF Rohrbogen 90°, Aluminium

Art. Nr.	DN	A	B	C	D
ZBA016	16	40	16	-	-



ISO-KF Reduzierstück, Aluminium

Art. Nr.	DN	A	B	C	D
ZRRG2516	25 / 16	16	28	-	-