



HOVEN HYDRAULIK

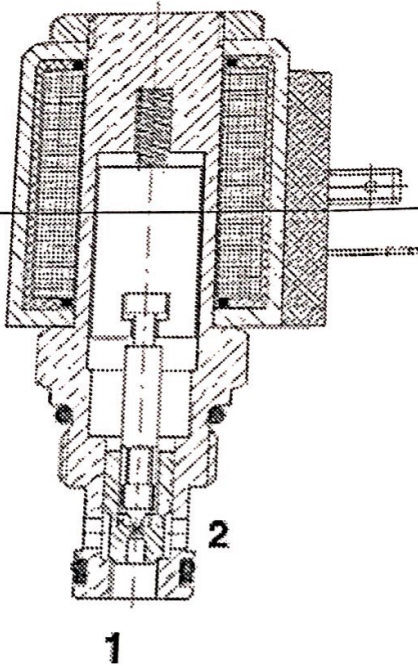
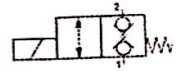
# Directional control valve

755 WSM06020W01CN/G24

Position

48

M6107



Technical Data			
<b>General</b>			
Design			seat valve (direct operated)
Mounting position			as desired
Mounting type			cartridge valve
Ambient temperature, max.	°C		-20 ... +60
Weight	kg		0,33
<b>Hydraulic</b>			
Hydraulic fluid			mineral-oil based according to DIN 51 524 - part 1 and 2
Viscosity range	mm <sup>2</sup> /s		10 ... 420
Hydraulic fluid temperature range	°C		-20 ... +120
Contamination level			ISO 4406, class 21/19/16
Nominal pressure	port 1	bar	250
max. permissible	port 2	bar	250
Volume flow, max.		l/min	up to 19
<b>Electric</b>			
Type of supply			DC
Voltage ± tolerance	V		24 ± 15%
Current requirement	A		0,80
Response time	ON	ms	35
according to ISO 6403	OFF	ms	50
Duty cycle		%	100

04.2005

Wilhelm Hoven Maschinenfabrik GmbH & Co Stolberg/Rhld.

Brockenberg 27 • 52223 Stolberg  
Postfach 1429 • 52203 Stolberg  
<http://www.hoven.de>

Telefon (02402) 9653-0  
Telefax (02402) 965335  
e-mail: [info@hoven.de](mailto:info@hoven.de)

Page 1 of 1

755-210 E

Scanned by CamScanner

D000369-10900439 DC 000 00