

**ACCURATE ROD GUIDING**

High-performance self lubricating bearing and non-abrasive scraper seal.

**ACCURATE CUSHIONING LENGTH**

by means of micrometer screws (captive screws).

**LIGHT AND ESTHETIC DESIGN**

Tie-rod construction with hard anodized aluminium tube.

**POSITION DETECTOR**

Cylinder equipped with a piston with a permanent magnet, for position sensors, type:

- REED switch
- magneto resistive (MR)
- inductive (epoxy barrel)

**STURDY DESIGN**

Rod in hard chrome steel

**EASY FITTING**

Large choice of standard fittings and rod ends (see below).

**PNEUMATIC CUSHIONING**


with large cushioning length.

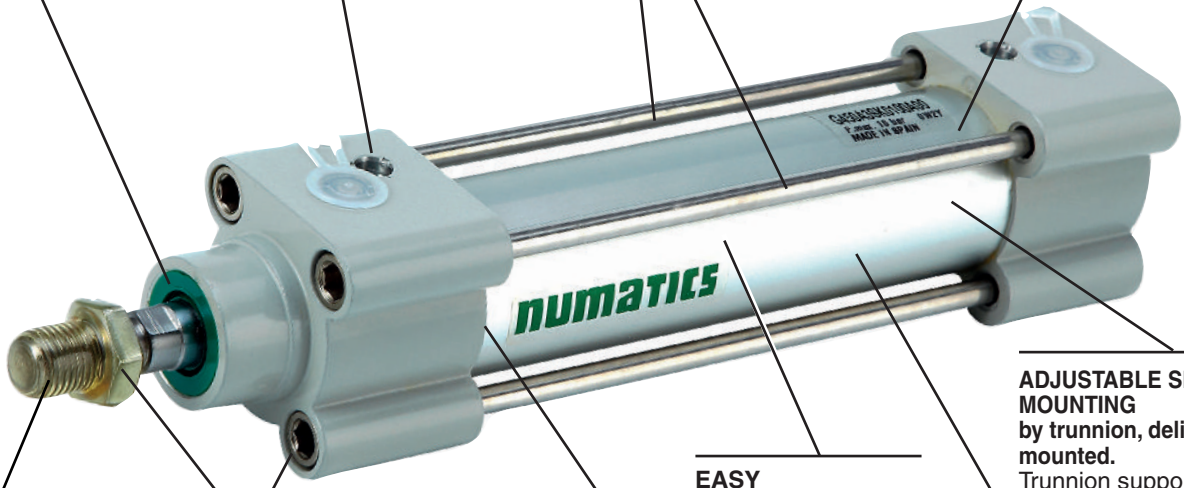
**EASY MAINTENANCE**

These cylinders do not require any lubrication.

**ADJUSTABLE SLIDING MOUNTING**

by trunnion, delivered mounted. Trunnion supports upon request.

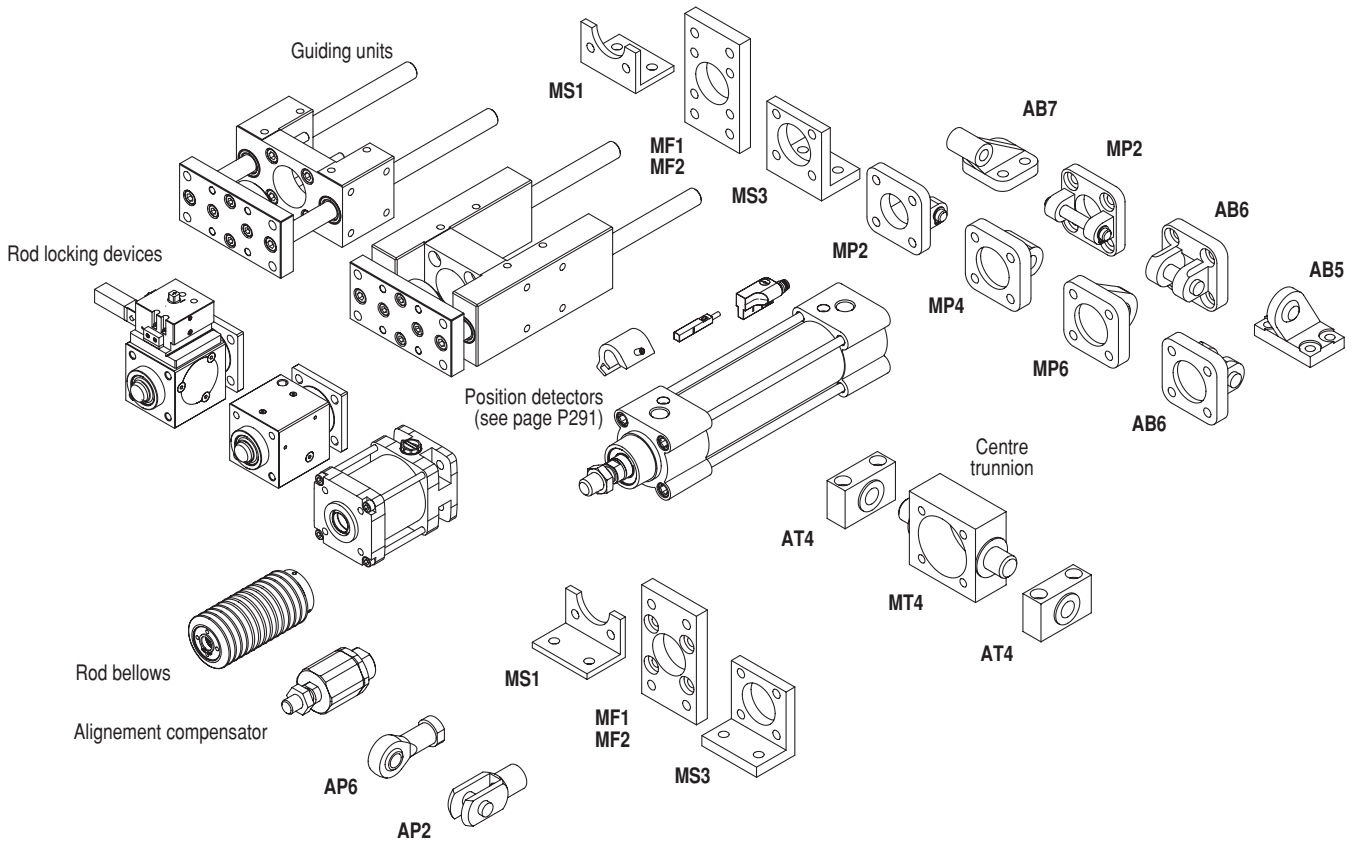
**VERSIONS TO ATEX**  (see page P229-3)



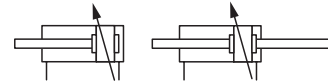
**B**

**OPTIONS** (see page P229-7)

**STANDARD MOUNTINGS** (see page P235)



**SPECIAL ASSEMBLIES** (see page P239-13)



**GENERAL**

<b>Detection</b>	<b>Equipped for magnetic position detectors</b>
<b>Fluid</b>	Air or inert gas, filtered, lubricated or not
<b>Operating pressure</b>	10 bar, max. [1 bar =100 kPa]
<b>Ambient temperature</b>	-20°C to +70°C (for higher temperature, see HTP option)
<b>Optimal max. speed</b>	≤ 1 m/s (for optimal service life)
<b>Max. speed rate</b>	2 m/s (for higher and lower speed rate, see LFS option)
<b>Standards</b>	ISO 15552

**CONSTRUCTION**

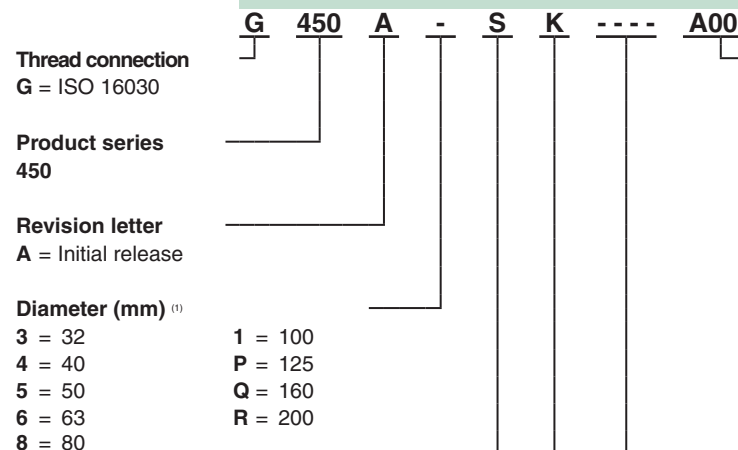
<b>Barrel</b>	Hard anodized aluminium alloy	
<b>Tie rods</b>	Stainless steel (Ø32-100), steel (Ø 125-200)	
<b>Front and rear ends</b>	Aluminium alloy	
<b>Bearing</b>	Self-lubricating metal	
<b>Cushioning seals</b>	PUR (polyurethane)	
<b>Cushioning</b>	Pneumatic, adjustable from both sides with captive screw	
<b>Rod</b>	Hard chromed steel	
<b>Rod nut</b>	Galvanised steel	
<b>Piston</b>	Ø 32 to 80 mm	POM (polyacetal)
	Ø 100 to 200 mm	light alloy
	fitted with an annular permanent magnet	
<b>Piston seals</b>	PUR (polyurethane)	



2D/3D CAD models - *In 3D*

**HOW TO ORDER**

**15-DIGIT PRODUCT CODE**



**Options**

- A00** = Without
- FMT** = Fixed centre trunnion (axis perpendicular to the ports)<sup>(2)</sup>
- FST** = Fixed centre trunnion (axis parallel to the ports)<sup>(2)</sup>
- UCG** = Plain bearing "U" guiding unit (see P229-20)
- HCG** = Plain bearing "H" guiding unit (see P229-20)
- HBG** = Ball bearing "H" guiding unit (see P229-20)
- AT1** = ATEX zones 1/21
- AT2** = ATEX zones 2/22
- HTP** = High temperature (up to 120°C)<sup>(3)</sup>
- FPM** = FPM seals
- FFP** = FPM front end seals
- NPC** = Anticorrosion treatment on covers & high-quality rod seals
- MMT** = Ø125 mm, with non groved profiled tube
- MM4** = Ø125 mm, with non groved profiled tube and non fixed MT4, axis perpendicular to the port
- MM5** = Ø125 mm, with non groved profiled tube and non fixed MT4, axis parallel to the port
- STN** = Stainless steel cover nuts + tie rods
- LFS** = Low friction piston seals - Ø 32 to 80 mm<sup>(4)</sup>(see P229-15)
- NCS** = Without pneumatic cushioning
- TAN** = Tandem, double force, linked rods (see P229-16)
- NDT** = Epoxy tube (prepared for inductive detector)

<sup>(2)</sup> For fixed supplied centre trunnion, consult our Dynamic Product Modeling Tool on [www.asconumatics.eu](http://www.asconumatics.eu) and indicate XV dimension.

<sup>(3)</sup> Magnetic detectors cannot be fitted to this version.

<sup>(4)</sup> Special characteristics for this option:

- . piston material: light alloy
- . max. speed rate: 3 m/s

**Recommended standard strokes (mm) <sup>(5)</sup>**

Ø mm	connect. Ø (G)	25	50	80	100	125	160	200	250	320	400	500	630	700	800	900	1000	1500	max. stroke
32	G1/8	●	●	●	●	●	●	●	●	●	●	●	●	●	●	●	●	●	2000
40	G1/4	●	●	●	●	●	●	●	●	●	●	●	●	●	●	●	●	●	2000
50	G1/4	●	●	●	●	●	●	●	●	●	●	●	●	●	●	●	●	●	2000
63	G3/8	●	●	●	●	●	●	●	●	●	●	●	●	●	●	●	●	●	2000
80	G3/8	●	●	●	●	●	●	●	●	●	●	●	●	●	●	●	●	●	2000
100	G1/2	●	●	●	●	●	●	●	●	●	●	●	●	●	●	●	●	●	2000
125	G1/2	●	●	●	●	●	●	●	●	●	●	●	●	●	●	●	●	●	2000
160	G3/4	●	●	●	●	●	●	●	●	●	●	●	●	●	●	●	●	●	2000
200	G3/4	●	●	●	●	●	●	●	●	●	●	●	●	●	●	●	●	●	2000

Strokes range available up to "max. stroke" column on the right.  
Please note strokes marked in grey exceed the maximum recommended.

<sup>(5)</sup> Other strokes on request. / Min. stroke: 5 mm

**POSITION DETECTORS**

Magnetic position detectors must be ordered separately: "T" model (see page P291), reed switch or magneto-resistive type

**MOUNTINGS**

Mountings must be ordered separately: see page P235

### DIMENSIONS (mm), WEIGHT (kg)



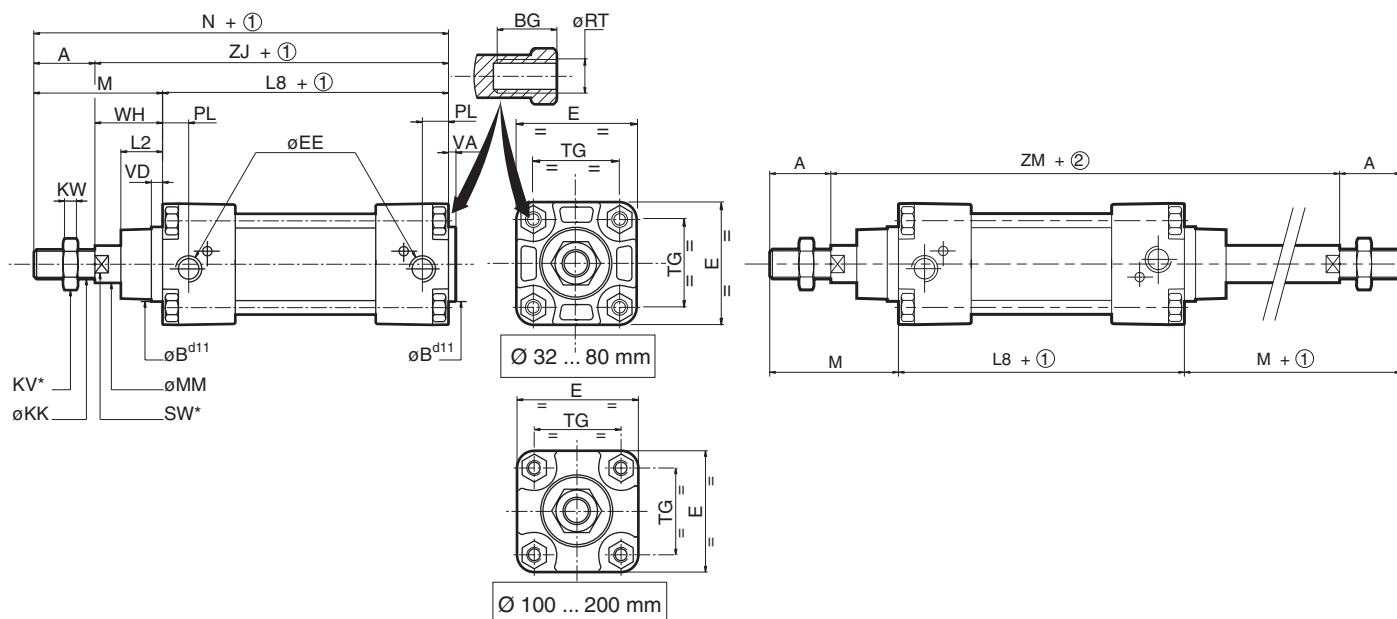
#### SINGLE-ROD TYPE CYLINDER

Tie-rod cylinder  
ISO 15552



#### THROUGH-ROD TYPE CYLINDER

Tie-rod cylinder  
ISO 15552



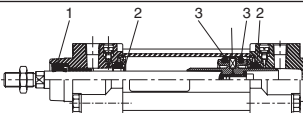
- ① Stroke
- ② Stroke x 2

Ø (mm)	A	ØB <sup>d11</sup>	BG	E	ØEE	ØKK	KV	KW	L2	L8	M	ØMM	N	PL	ØRT	SW (5)	TG	VA	VD min.	WH	ZJ	ZM	weight	
																							(3)	(4)
32	22	30	16	50	G1/8	M10x1,25	16	5	17	94	48	12	142	14	M6	10	32,5 ± 0,5	4	4	26	120	146	0,590	0,235
40	24	35	16	57,5	G1/4	M12x1,25	18	6	19	105	54	16	159	16	M6	13	38 ± 0,5	4	4	30	135	165	0,840	0,335
50	32	40	16	65	G1/4	M16x1,5	24	8	24	106	69	20	175	18,5	M8	17	46,5 ± 0,6	4	4	37	143	180	1,200	0,510
63	32	45	16	79	G3/8	M16x1,5	24	8	24	121	69	20	190	17	M8	17	56,5 ± 0,7	4	4	37	158	195	1,500	0,540
80	40	45	17	92	G3/8	M20x1,5	30	10	33	128	86	25	214	16,5	M10	22	72 ± 0,7	4	4	46	174	220	2,860	0,840
100	40	55	17	120	G1/2	M20x1,5	30	10	35,5	138	91	25	229	21	M10	22	89 ± 0,7	4	4	51	189	240	3,675	1,185
125	54	60	24	145	G1/2	M27x2	41	13,5	40	160	119	32	279	32	M12	27	110 ± 1,1	6	6	65	225	290	6,955	1,360
160	72	65	29,5	180	G3/4	M36x2	55	18	58	180	152	40	332	35,5	M16	36	140 ± 1,1	6	6	80	260	340	12,835	2,100
200	72	75	29,5	220	G3/4	M36x2	55	18	58	180	167	40	347	35	M16	36	175 ± 1,1	6	6	95	275	370	17,575	2,500

(3) Cylinder weight at 0 mm stroke.

(4) Weight to be added per additional 100 mm length.

### SPARE PARTS KITS CODE

Ø (mm)	1 + 2 + 3 <sup>(1)</sup>		rod + piston unit
			
32		<b>97802343</b>	<b>97802736</b> .... <sup>(2)</sup>
40		<b>97802344</b>	<b>97802737</b> .... <sup>(2)</sup>
50		<b>97802345</b>	<b>97802738</b> .... <sup>(2)</sup>
63		<b>97802346</b>	<b>97802739</b> .... <sup>(2)</sup>
80		<b>97802347</b>	<b>97802740</b> .... <sup>(2)</sup>
100		<b>97802259</b>	<b>97802741</b> .... <sup>(2)</sup>
125		<b>97802260</b>	<b>97802742</b> .... <sup>(2)</sup>
160		<b>97802261</b>	<b>97802743</b> .... <sup>(2)</sup>
200		<b>97802262</b>	<b>97802744</b> .... <sup>(2)</sup>
250		<b>contact us</b>	<b>contact us</b>

<sup>(1)</sup> For best results, use grease supplied in each kit. Supplementary tube (11 cm<sup>3</sup>) available on request, catalogue number: **97802100**

<sup>(2)</sup> Specify stroke length (in mm).

# B

