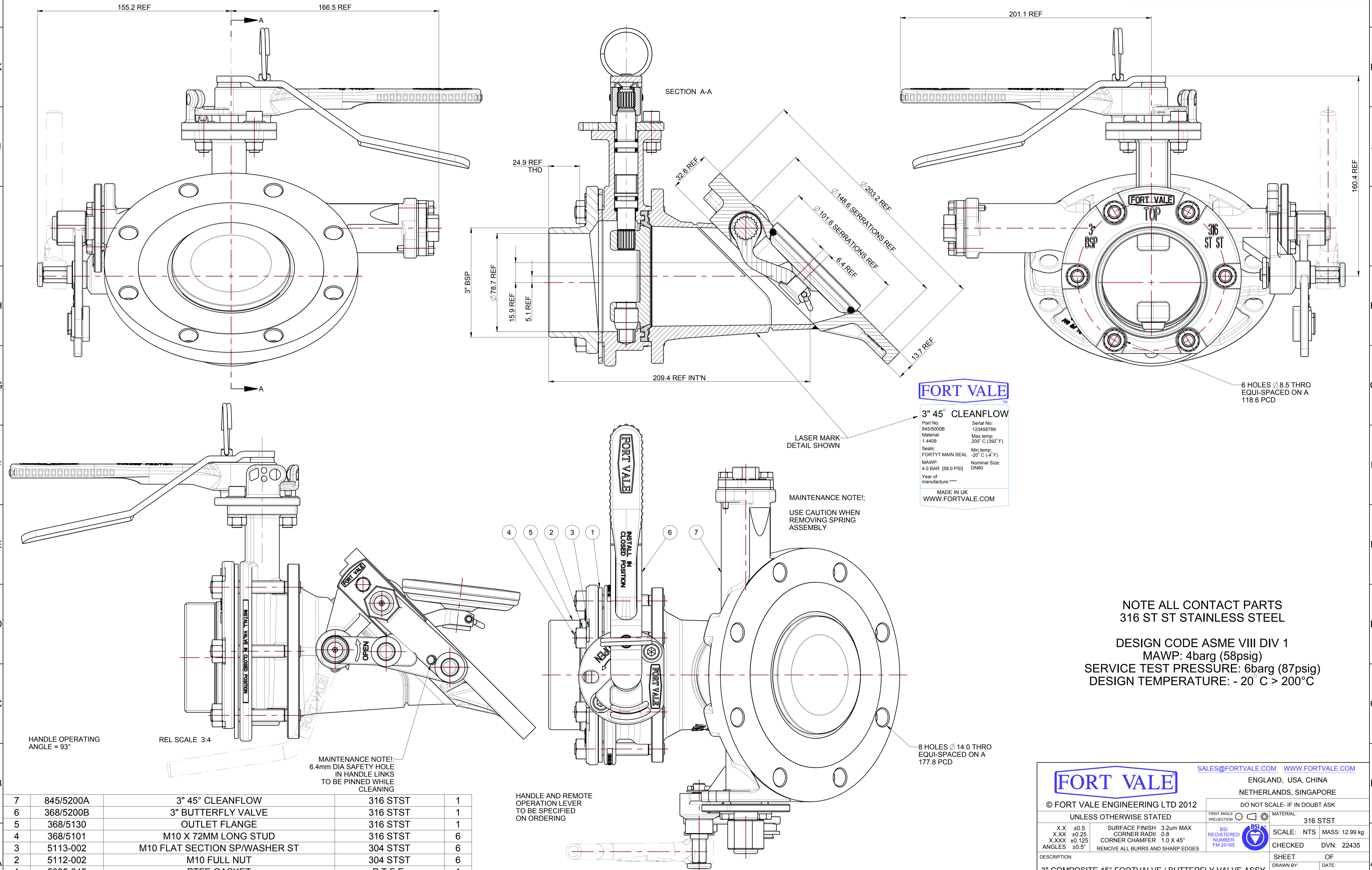


MOD	REVISION	SIG & DATE
01	368/5200A CLEANFLOW FOOTVALVE PICTORIALY UPDATED	PW 16-Aug-99
02	BUTTERFLY HANDLE PICTORIALY UPDATED	PW 16-Sep-04
03	DRAWING METRICATED & LASER MARK DETAILS ADDED DESIGN CODE UPDATED, PATENT & TANK PAD NOTES REMOVED	MS 27-Jul-11
04	368/5200A CLEANFLOW FOOTVALVE PICTORIALY UPDATED	PW 31-Oct-12



**FORT VALE**

**3" 45° CLEANFLOW**

Part No: 845/5000B      Serial No: 123456789  
 Material: 1.4409      Max temp: 200° C (392° F)  
 Seals: FORTYT MAIN SEAL      Min temp: -20° C (-4° F)  
 MAWP: 4.0 BAR (58.0 PSI)      Nominal Size: DN80  
 Year of manufacture:\*\*\*\*

MADE IN UK  
 WWW.FORTVALE.COM

MAINTENANCE NOTE:  
 USE CAUTION WHEN  
 REMOVING SPRING  
 ASSEMBLY

NOTE ALL CONTACT PARTS  
 316 ST ST STAINLESS STEEL

DESIGN CODE ASME VIII DIV 1  
 MAWP: 4barg (58psig)  
 SERVICE TEST PRESSURE: 6barg (87psig)  
 DESIGN TEMPERATURE: - 20° C > 200° C

Index	Part Number	Description	Material	Qty
7	845/5200A	3" 45° CLEANFLOW	316 STST	1
6	368/5200B	3" BUTTERFLY VALVE	316 STST	1
5	368/5130	OUTLET FLANGE	316 STST	1
4	368/5101	M10 X 72MM LONG STUD	316 STST	6
3	5113-002	M10 FLAT SECTION SP/WASHER ST	304 STST	6
2	5112-002	M10 FULL NUT	304 STST	6
1	5005-345	PTFE GASKET	P.T.F.E.	1

Assembly BOM

**FORT VALE**      SALES@FORTVALE.COM      WWW.FORTVALE.COM

ENGLAND, USA, CHINA  
 NETHERLANDS, SINGAPORE

© FORT VALE ENGINEERING LTD 2012      DO NOT SCALE- IF IN DOUBT ASK

UNLESS OTHERWISE STATED      FIRST ANGLE PROJECTION      MATERIAL: 316 STST

X.X ±0.5	SURFACE FINISH 3.2um MAX	BSI REGISTERED NUMBER FM 20165
X.XX ±0.25	CORNER RADII 0.8	
X.XXX ±0.125	CORNER CHAMFER 1.0 X 45°	

REMOVE ALL BURRS AND SHARP EDGES

DESCRIPTION: 3" COMPOSITE 45° FOOTVALVE / BUTTERFLY VALVE ASSY

CHECKED: PW      OF: DATE: 06-Jan-99

DRG.NO.      845/5000B

TYPE: CLEANFLOW FOOTVALVE      A1 UNITS mm

HANDLE AND REMOTE  
 OPERATION LEVER  
 TO BE SPECIFIED  
 ON ORDERING

HANDLE OPERATING  
 ANGLE = 93°

REL SCALE 3:4

MAINTENANCE NOTE:  
 6.4mm DIA SAFETY HOLE  
 IN HANDLE LINKS  
 TO BE PINNED WHILE  
 CLEANING